



## Case Study - Water Management

### Company

Municipal Water Lincoln Water District

### Industry

Water

### Location

USA

### Website

[www.lincolnwaterdistrict.org](http://www.lincolnwaterdistrict.org)

### Challenge

Lincoln Water, located in Maine, was in need of upgrading their legacy National Instruments data collection system and were looking for a modern platform to sustain their systems for the future.

### Solution

The complete solution was built on the FactoryStudio® platform interfacing via Modbus to Sixnet I/O Modules through Sixnet cell routers to multiple pump stations, twin standpipe tanks, additional booster pumps and an underground reservoir.

### Results

The residents of Lincoln, ME and the Lincoln Water District now have a future proof, scalable SCADA platform to carry them for several decades. As they grow and need to add more pumping stations and tanks, they know FactoryStudio will deliver.

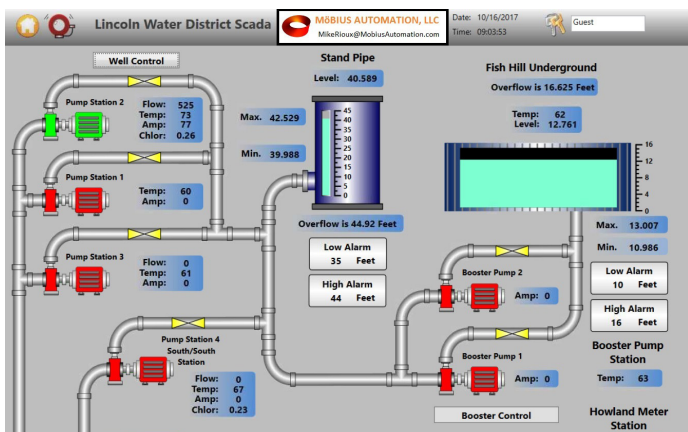


Accurate monitoring of the storage, transmission, and distribution of water for municipalities can involve massive networks of piping, monitors, linking remote stations, and pumps to a central control room.

When the Lincoln Water district needed to expand their operations, they realized their old system was not going to be stable enough to take on the new requirements and expansion. They looked at several software packages including Citect SCADA and FactoryStudio® from Tatsoft. After reviewing their options, Lincoln Water District selected FactoryStudio due to its inherent stability and reliability to monitor and control the equipment on the network and control devices in the current infrastructure and the new devices needed for expansion.

The new system has a FactoryStudio server and Rich client providing the monitoring and control to four pumping stations in four separate buildings, and twin 500,000-gallon steel standpipe tanks and an underground reservoir. The embedded FactoryStudio Modbus driver is used to communicate with Sixnet Ethertrak 2 I/O modules over several Sixnet Cell Routers. Although FactoryStudio has several built-in features such as Alarm notification, Reporting and more, Lincoln Water District deployed Topview alarm notification software that receives Alarms from FactoryStudio and dispatches them to the correct personnel and devices.

The System Integrator for the new modern and future-proof SCADA platform is Mike Rioux with Mobius Automation in Minot, ME. When asked why Mike selected the FactoryStudio engineering environment to deploy this project he replied with **“three clicks to everything”**.



What Mike meant is that any part of the engineering environment is only three clicks away and all the modules are designed by Tatsoft with the same look and feel. Whether you're connecting to your device, or configuring a Script or a Tag, the FactoryStudio engineering environment is the same, making learning FactoryStudio easy and straight forward.

*“We found FactoryStudio to be a very easy and intuitive platform. The Scalability from a small to enterprise system, wide range of features and connectivity made FactoryStudio an easy choice”*

- Mike Rioux, Mobius Automation

## FactoryStudio and Water Management

FactoryStudio is a powerful .NET-To-The Core, source independent application-based development platform delivering real-time information through a complete set of fully-integrated tools in a unified and intuitive engineering user interface. The platform is an extremely flexible tool, adapting to any Water or Wastewater project.

- Monitor & control all equipment in your facility and sub-stations
- Remote connectivity
- Manual, automatic or scheduled response to changing conditions
- Real-time and historical data monitoring
- Robust WITS “Telemetry” I/O driver, built in reporting
- Alarm and Event notification
- State of the art user interface and graphic editor

FactoryStudio includes standard modules for: real-time Tags and Assets database, User templates, Alarms and Events, Historian, SQL tables and queries, Recipes, XML, CSV, XPS and PDF Reports, built-in embedded SQL database engine and Web Server, Scripting, OPC Server and Client, embedded native communication protocols, graphical designer, with native runtime environments for .Net, Web, iOS, Android, Windows Compact Framework (Windows CE), Linux, including Raspberry Pi (rPi).

